



# 拉铆螺母

一站式紧固连接方案

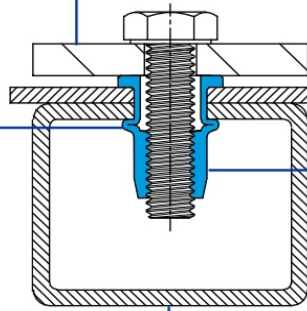




允许您使用螺栓或螺  
丝组装另一个组件

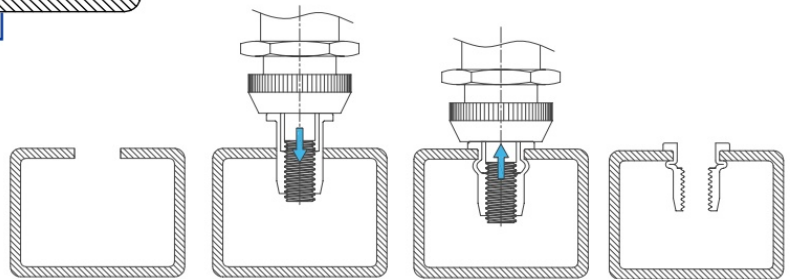
一种永久性  
的机械紧固件

盲装（单面）安装：用于后部  
难以或无法接近的应用场景

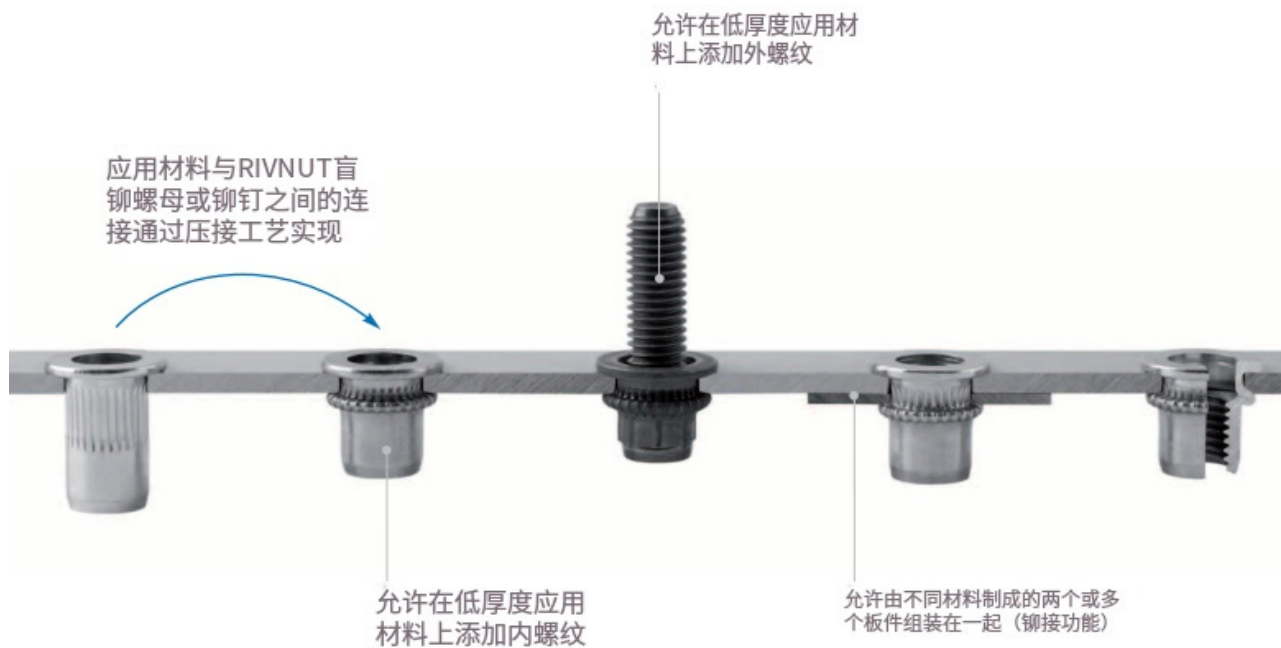


可将分离的板材或结构铆接在  
一起（充当铆钉）

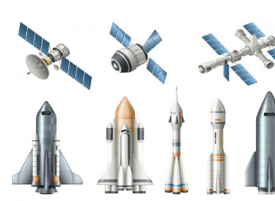
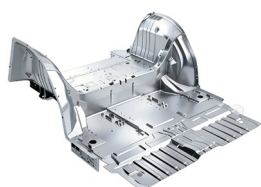
确保在薄或厚金属板/型材、复合  
材料或塑料上形成牢固的螺纹



**3秒内完成安装!**



## 行业应用



汽车专用铆螺母



新能源汽车专用铆螺母



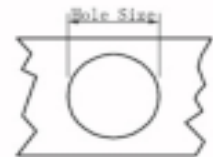
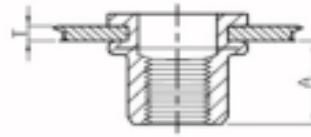
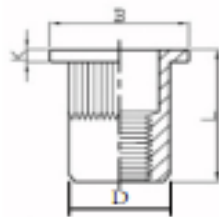
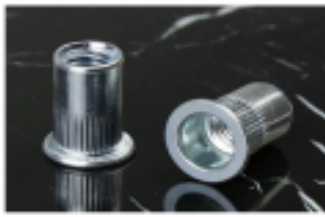
新能源汽车专用不锈钢铆螺母



新能源汽车专用不锈钢铆螺母



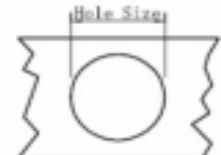
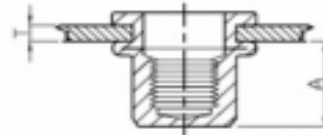
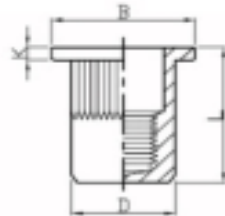
## 平头条纹铆螺母 Flat Head Kunrled Body



Unit(单位):mm

螺纹 Thread	E(Grip Range) Min.Max.		A	Hole Size $\begin{matrix} +0.1 \\ 0 \end{matrix}$	K	B	D $\begin{matrix} -0.07 \\ -0.1 \end{matrix}$	L	编码 P/N
M3	0.5	1.5	6.0	5.0	0.8	8.0	4.9	9	FL-YS3
M4	0.5 2.0	2.0 3.5	6.0	6.0	0.8	9.0	5.9	11 12.5	FL-YS4
M5	0.5 2.5	2.5 4.0	7.5 8.5	7.0	1.0	10.0	6.9	13.0 16.0	FL-YS5
M6	0.5 3.0	3.0 5.5	9.2 10.5	9.0	1.3	12.30(*13.0)	8.9	15.0 17.5	FL-YS6
M8	1.0 3.5	3.5 6.0	11.5	11.0	1.5	14.5(*16.0)	10.9	18.0 20.0	FL-YS8
M10	1.0 4.0	4.0 6.5	13.5	13.0	1.7	17.0(*19.0)	12.9	21.0 24.0	FL-YS10
M12	1.0 4.0	4.0 6.5	13.5 14.0	15.0	1.7	18.0	14.9	22.0 25.0	FL-YS10
M10(12H)	1.0	3.5	11.0	12.0	1.6	16.0	11.9	19.0	FL-YS10-12H
M12(16H)	1.0 3.5	3.5 6.0	15.0 16.0	16.0	2.0	22.0	15.9	25.0 28.0	FL-YS12-16H

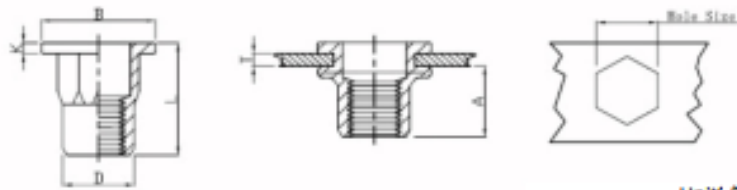
## 平头条纹盲孔铆螺母 Flat Head Kunrled Body Close End



Unit(单位):mm

螺纹 Thread	E(Grip Range) Min.Max.		A	Hole Size $\begin{matrix} +0.1 \\ 0 \end{matrix}$	K	B	D $\begin{matrix} -0.07 \\ -0.1 \end{matrix}$	L	编码 P/N
M4	0.5 2.0	2.0 4.0	11.3	6.0	0.8	9.0	5.9	16.0 18.0	FL-SM4
M5	0.5 2.5	2.5 5.0	11.5	7.0	1.0	10.0	6.9	17.0 19.0	FL-SM5
M6	0.5 3.0	3.0 5.0	12.7	9.0	1.3	12.3	8.9	19.2 21.0	FL-SM6
M8	0.5 3.0	3.0 5.5	14.8	11.0	1.5	15.0	10.9	21.5 24.0	FL-SM8
M10	1.0	4.0	19.2	13.0	1.6	17.0	12.9	27.0	FL-SM10

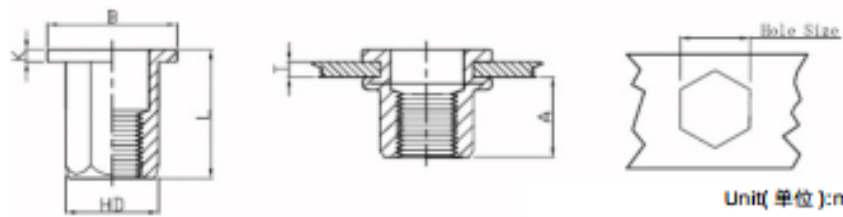
## 平头半六角铆螺母 Flat Head Semi-Hexagonal Body



Unit( 单位 ):mm

螺纹 Thread	E(Grip Range) Min.Max.		A	Hole Size $\begin{matrix} +0.1 \\ 0 \end{matrix}$	K	B	$D \begin{matrix} -0.07 \\ -0.1 \end{matrix}$	L	编码 P/N
M4	0.5	2.0	6.5	6.0	0.8	9.0	5.9	11.0	FL-PB4
M5	0.5	2.5	8.0	7.0	1.0	10.0	6.9	13.0	FL-PB5
M6	0.5	3.0	8.5	9.0	1.35	12.7	8.9	15.0	FL-PB6
M8	1.0	3.5	10.5	11.0	1.5	16.0	10.9	18.0	FL-PB8
M10	1.0	3.5	12.5	13.0	1.7	18.0	12.9	21.0	FL-PB10
M12	1.0	4.0	14.0	15.0	1.7	20.0	14.9	23.0	FL-PB12
M10(12H)	1.0	3.5	11.0	12.0	1.6	17.0	11.9	19.0	FL-PB10-12H
M12(16H)	2.0	5.0	16.5	16.0	2.2	23.0	15.9	27.0	FL-PB10-16H

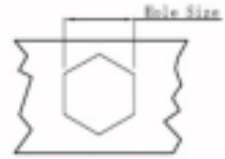
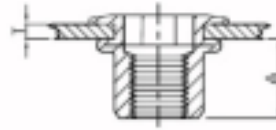
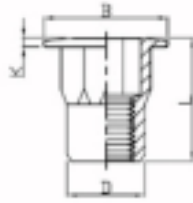
## 平头全六角铆螺母 Flat Head Full Hexagonal Body



Unit( 单位 ):mm

螺纹 Thread	E(Grip Range) Min.Max.		A	Hole Size $\begin{matrix} +0.1 \\ 0 \end{matrix}$	K	B	$D \begin{matrix} -0.07 \\ -0.1 \end{matrix}$	L	编码 P/N
M4	0.5	2.0	6.5	6.0	0.8	9.0	5.9	11.0	FL-PB4
M5	0.5	2.5	8.0	7.0	1.0	10.0	6.9	13.0	FL-PB5
M6	0.5	3.0	8.5	9.0	1.35	12.7	8.9	15.0	FL-PB6
M8	1.0	3.5	10.5	11.0	1.5	16.0	10.9	18.0	FL-PB8
M10	1.0	3.5	12.5	13.0	1.7	18.0	12.9	21.0	FL-PB10
M12	1.0	4.0	14.0	15.0	1.7	20.0	14.9	23.0	FL-PB12
M10(12H)	1.0	3.5	11.0	12.0	1.6	17.0	11.9	19.0	FL-PB10-12H
M12(16H)	2.0	5.0	16.5	16.0	2.2	23.0	15.9	27.0	FL-PB10-16H

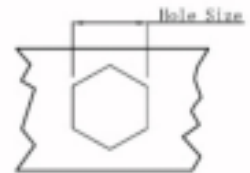
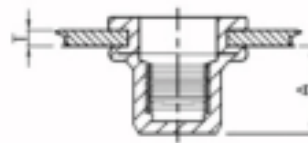
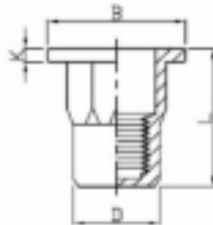
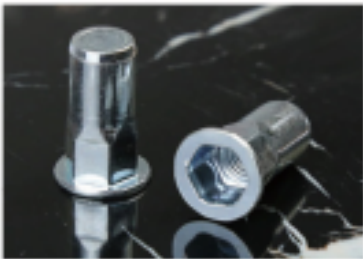
## 平头内外六角铆螺母 Flat Head Inside&Outside Hexagonal Body



Unit( 单位 ):mm

螺纹 Thread	E(Grip Range) Min.Max.		A	Hole Size $+0.1$ 0	K	B	D $-0.07$ $-0.1$	L	编码 P/N
M4	0.5	2.0	7.0	6.0	0.8	9.0	5.9	11.0	FL-PBL4
M5	0.5	2.5	7.5	7.0	1.0	10.0	6.9	13.0	FL-PBL5
M6	0.5	3.0	9.2	9.0	1.3	12.7	8.9	15.0	FL-PBL6
M8	1.0	3.5	11.2	11.0	1.5	16.0	10.9	18.0	FL-PBL8
M10	1.0	4.0	12.8	13.0	1.7	18.0	12.9	21.0	FL-PBL10

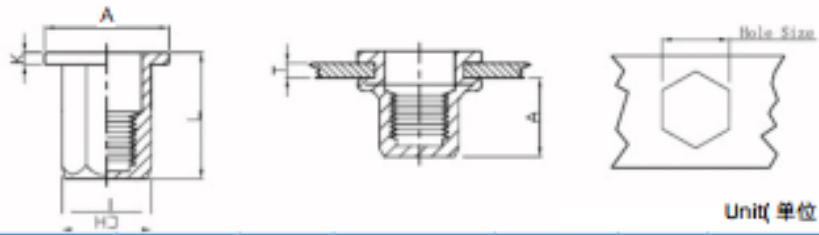
## 平头内外六角盲孔铆螺母 Flat Head Inside&Outside Hexagonal Body Close End



Unit( 单位 ):mm

螺纹 Thread	E(Grip Range) Min.Max.		A	Hole Size $+0.1$ 0	K	B	D $-0.07$ $-0.1$	L	编码 P/N
M4	0.5	2.0	11.5	6.0	1.0	9.0	5.9	16.0	FL-PBLM4
M5	0.5	2.5	13.5	7.0	1.0	10.0	6.9	18.5	FL-PBLM5
M6	0.5	3.0	17.0	9.0	1.5	12.7	8.9	23.0	FL-PBLM6
M8	1.0	3.5	18.2	11.0	1.5	16.0	10.9	25.0	FL-PBLM8
M10	1.0	4.0	25.0	13.0	1.7	19.0	12.9	33.0	FL-PBLM10

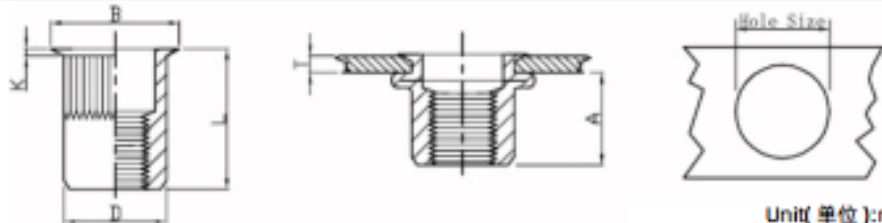
## 平头全六角盲孔铆螺母 Flat Head Full Hexagonal Body Close End



Unit(单位):mm

螺纹 Thread	E(Grip Range) Min.Max.		A	Hole Size $^{+0.1}$ 0	K	B	$D_{-0.07}$ $-0.1$	L	编码 P/N
M4	0.5	2.0	11.5	6.0	1.0	9.0	5.9	15.0	FL-PQM4
M5	0.5	2.5	13.5	7.0	1.0	10.0	6.9	18.5	FL-PQM5
M6	0.5	3.0	17.0	9.0	1.5	12.7	8.9	23.0	FL-PQM6
M8	1.0	3.5	18.2	11.0	1.5	16.0	10.9	26.0	FL-PQM8
M10	1.0	4.0	25.0	13.0	2.0	19.0	12.9	33.0	FL-PQM10

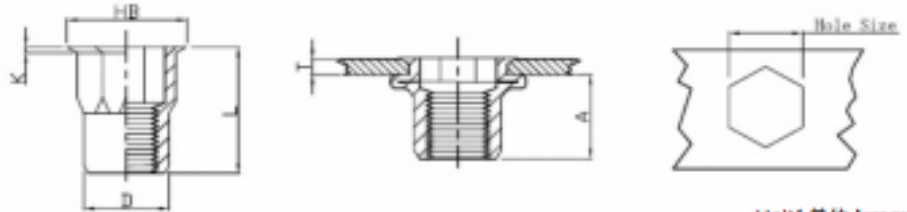
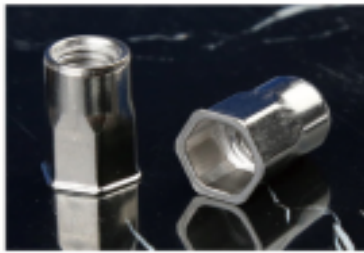
## 小沉头条纹铆螺母 Small Head Kurlled Body



Unit(单位):mm

螺纹 Thread	E(Grip Range) Min.Max.		A	Hole Size $^{+0.1}$ 0	K	B	$D_{-0.07}$ $-0.1$	L	编码 P/N
M3	0.5	2.0	6.2	5.0	0.5	6.0	4.9	9.0	FL-XCS3
M4	0.5 2.0	2.0 4.0	7.0	6.0	0.5	7.0	5.9	10.0 13.0	FL-XCS4
M5	0.5 2.0	2.0 4.0	7.0	7.0	0.5	8.0	6.9	12.0 13.0	FL-XCS5
M6	0.5 2.5	2.5 5.0	8.5	9.0	0.6	10.0	8.9	14.0 16.0	FL-XCS6
M8	0.5 3.0	3.0 5.0	10.0	11.0	0.65	12.0	10.9	17.0 18.5	FL-XCS8
M10	1.0 3.5	3.5 6.0	12.5	13.0	0.7	14.0	12.9	19.0 22.0	FL-XCS10
M10(12H)	1.0	3.5	12.5	12.0	0.7	13.0	11.9	19.5	FL-XCS10-12H
M12H	1.0	4.0	16.2	16.0	0.75	17.6	15.9	24.2	FL-XCS12

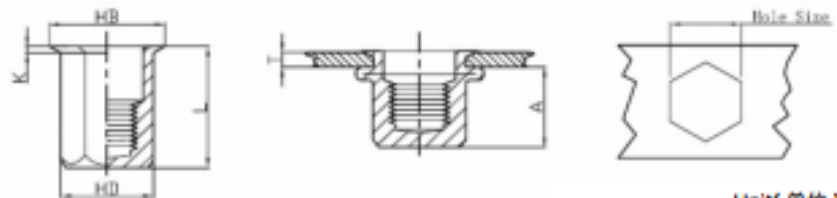
### 小沉头内外半六角铆螺母 Small Head Inside&Outside Hexagonal Body



Unit(单位):mm

螺纹 Thread	E(Grip Range) Min.Max.		A	Hole Size $\begin{smallmatrix} +0.1 \\ 0 \end{smallmatrix}$	K	B	$D \begin{smallmatrix} -0.07 \\ -0.1 \end{smallmatrix}$	L	编码 P/N
M4	0.5	2.0	8.3	6.0	0.5	7.0	5.9	10.0	FL-CBL4
M5	0.5	2.5	8.7	7.0	0.5	8.0	6.9	12.0	FL-CBL5
M6	1.0	3.5	10.5	9.0	0.6	10.0	8.9	14.0	FL-CBL6
M6	3.0	6.0	11.5	9.0	0.6	10.0	8.9	16.5	FL-CBL6-1
M8	1.0	3.5	11.3	11.0	0.65	12.0	10.9	17.0	FL-CBL8
M10	1.0	4.0	12.8	13.0	0.75	14.5	12.9	19.0	FL-CBL10

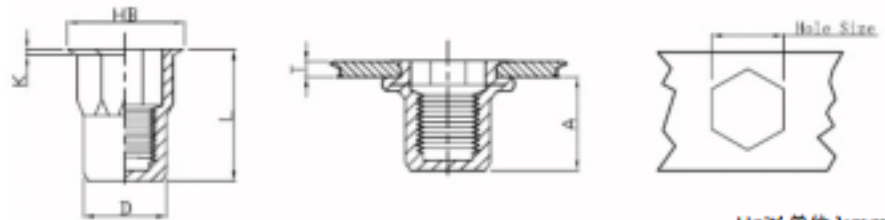
### 小沉头全六角盲孔铆螺母 Small Head Full Hexagonal Body Close End



Unit(单位):mm

螺纹 Thread	E(Grip Range) Min.Max.		A	Hole Size $\begin{smallmatrix} +0.1 \\ 0 \end{smallmatrix}$	K	B	$D \begin{smallmatrix} -0.07 \\ -0.1 \end{smallmatrix}$	L	编码 P/N
M4	0.5	2.5	12.3	6.0	0.5	7.0	5.9	16.0	FL-CQM4
M5	0.5	3.0	15.2	7.0	0.5	8.0	6.9	20.0	FL-CQM5
M6	0.5	3.5	14.5	9.0	0.6	10.0	8.9	20.5	FL-CQM6
M8	1.0	4.0	17.0	11.0	0.65	12.0	10.9	23.0	FL-CQMB
M10	1.0	4.5	20.0	13.0	0.75	14.5	12.9	28.5	FL-CQM10

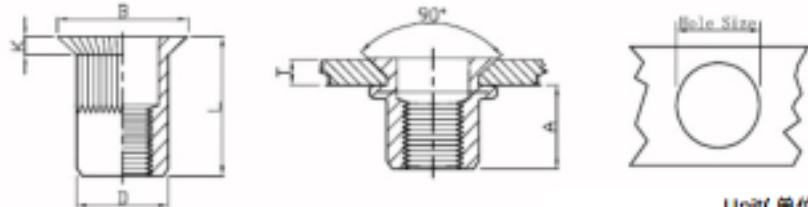
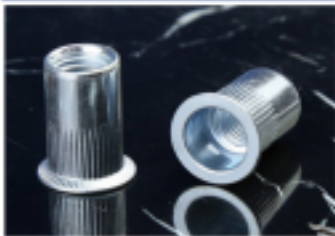
### 小沉头内外半六角盲孔铆螺母 Small Head Inside&Outside Hexagonal Body Close End



Unit(单位):mm

螺纹 Thread	E(Grip Range) Min.Max.		A	Hole Size $\begin{matrix} +0.1 \\ 0 \end{matrix}$	K	B	D $\begin{matrix} -0.07 \\ -0.1 \end{matrix}$	L	编码 P/N
M4	0.5	2.0	11.5	6.0	0.5	7.0	5.9	15.5	FL-CBLM4
M5	0.5	2.5	13.5	7.0	0.5	8.0	6.9	18.0	FL-CBLM5
M6	0.5	3.0	15.8	9.0	0.6	10.0	8.9	21.5	FL-CBLM6
M8	1.0	3.5	18.2	11.0	0.65	12.0	10.9	24.0	FL-CBLM8
M10	1.0	4.0	23.2	13.0	0.75	14.5	12.9	30.5	FL-CBLM10

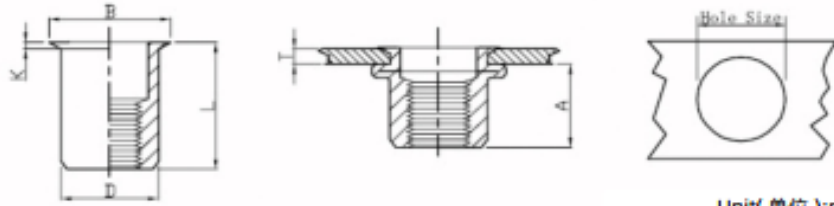
### 大沉头条纹铆螺母 Countersunk Head Kunrlled Body



Unit(单位):mm

螺纹 Thread	E(Grip Range) Min.Max.		A	Hole Size $\begin{matrix} +0.1 \\ 0 \end{matrix}$	K	B	D $\begin{matrix} -0.07 \\ -0.1 \end{matrix}$	L	编码 P/N
M4	1.5	3.0	6.5	6.0	1.5	9.0	5.9	11.0	FL-DCS4
M5	1.5	3.5	7.5	7.0	1.5	10.0	6.9	13.0	FL-DCS5
M6	1.5	4.0	9.0	9.0	1.5	12.0	8.9	15.0	FL-DCS6
M8	2.0	4.5	11.0	11.0	1.5	14.0	10.9	18.5	FL-DCS8
M10	2.0	5.0	13.0	13.0	1.5	16.0	15.9	21.0	FL-DCS10
M12	2.0	5.0	16.5	16.0	1.5	19.0	15.9	24.0	FL-DCS12

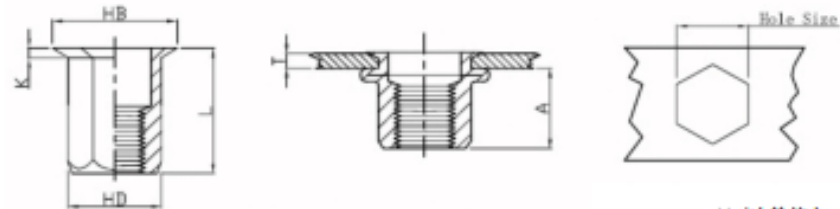
### 小沉头圆柱 Reduce Head Round Body



Unit(单位):mm

螺纹 Thread	E(Grip Range) Min.Max.		A	Hole Size $\begin{matrix} +0.1 \\ 0 \end{matrix}$	K	B	D $\begin{matrix} -0.07 \\ -0.1 \end{matrix}$	L	编码 P/N
	Min.	Max.							
M4	0.5 2.5	2.5 5.0	6.7	6.0	5.9	7.0	0.5	11.0 13.5	FL-XC4
M5	0.5 3.0	3.0 5.0	9.0	7.0	6.9	8.0	0.5	14.5 16.0	FL-XC5
M6	1.0 3.5	3.5 6.0	10.0	9.0	8.9	10.0	0.6	16.0 18.0	FL-XC6
M8	1.0 4.0	4.0 6.0	11.5	11.0	10.9	12.0	0.65	18.0 20.0	FL-XCB
M10	1.0 3.5	3.5 6.0	12.5 14.5	13.0	12.9	14.5	0.75	19.0 23.5	FL-XC10

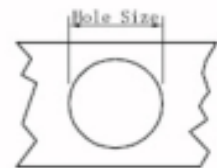
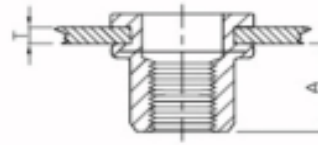
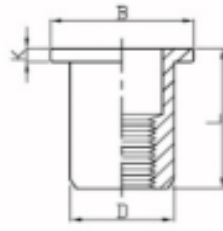
### 小沉头全六角 Reduce Hex Head Full-Hex Body



Unit(单位):mm

螺纹 Thread	E(Grip Range) Min.Max.		A	Hole Size $\begin{matrix} +0.1 \\ 0 \end{matrix}$	K	B	D $\begin{matrix} -0.07 \\ -0.1 \end{matrix}$	L	编码 P/N
	Min.	Max.							
M4	0.5 2.5	2.5 5.0	6.7	6.0	5.9	7.0	0.5	11.0 13.5	FL-XC4
M5	0.5 3.0	3.0 5.0	9.0	7.0	6.9	8.0	0.5	14.5 16.0	FL-XC5
M6	1.0 3.5	3.5 6.0	10.0	9.0	8.9	10.0	0.6	16.0 18.0	FL-XC6
M8	1.0 4.0	4.0 6.0	11.5	11.0	10.9	12.0	0.65	18.0 20.0	FL-XCB
M10	1.0 3.5	3.5 6.0	12.5 14.5	13.0	12.9	14.5	0.75	19.0 23.5	FL-XC10

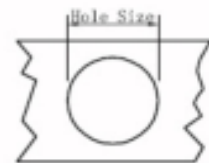
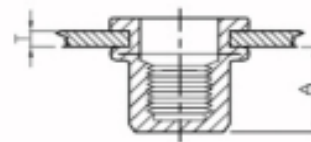
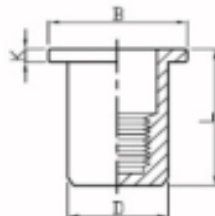
## 平头圆柱铆螺母 Flat Head Round Body



Unit( 单位 ):mm

螺纹 Thread	E(Grip Range) Min.Max.		A	Hole Size $\begin{matrix} -0.1 \\ 0 \end{matrix}$	K	B	D $\begin{matrix} -0.07 \\ -0.1 \end{matrix}$	L	编码 P/N
M3	0.5 1.5	1.5 2.5	4.7	5.0	0.8	7.2	4.9	9 9	FL-YG3
M4	0.5 2.0	2.0 3.5	6.0	6.0	0.8				
M5	0.5 2.5	2.5 4.0	7.5 8.5	7.0	1.0	10.0	6.9	13.0 16.0	FL-YG5
M6	0.5 3.0	3.0 5.5	9.2	9.0	1.3				
M8	0.5 3.5	3.5 6.0	11.5	11.0	1.5	15.0	10.9	18.0 21.0	FL-YG8
M10	0.5	2.5	11.5	13.0	1.5				
M10	2.5 4.0	4.0 6.0	12.5	13.0	1.6	17.0	12.9	21.0 24.0	FL-YG10-1
M10(12H)	1.0	3.5	11.0	12.0	1.6				
M12H	1.0 4.0	4.0 6.5	13.5	15.0	1.7	18.0	14.9	22.0 25.0	FL-YG12
M12(16H)	1.0	4.0	16.0	16.0	2.0	22.0	15.9	25.0	FL-YG12-16H

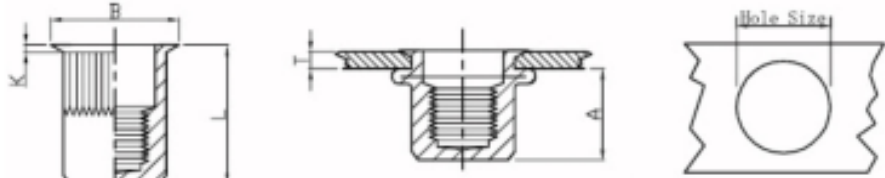
## 平头圆柱盲孔铆螺母 Flat Head Round Body



Unit( 单位 ):mm

螺纹 Thread	E(Grip Range) Min.Max.		A	Hole Size $\begin{matrix} -0.1 \\ 0 \end{matrix}$	K	B	D $\begin{matrix} -0.07 \\ -0.1 \end{matrix}$	L	编码 P/N
M3	0.5	1.5	10.0	5.0	0.8	7.2	4.9	13.3	FL-YM3
M4	0.5 2.0	2.0 4.0	11.3	6.0	0.8	9.0	5.9	16.0 18.0	FL-YM4
M5	0.5 2.5	2.5 5.0	11.5	7.0	1.0	10.0	6.9	17.0 19.0	FL-YM5
M6	0.5 3.0	3.0 5.5	12.7	9.0	1.3	12.3	8.9	19.2 21.0	FL-YM6
M8	0.5 3.0	3.0 5.5	14.8	11.0	1.5	15.0	10.9	21.5 24.0	FL-YM8
M10	1.0	4.0	19.2	13.0	1.6	17.0	12.9	27.0	FL-YM10

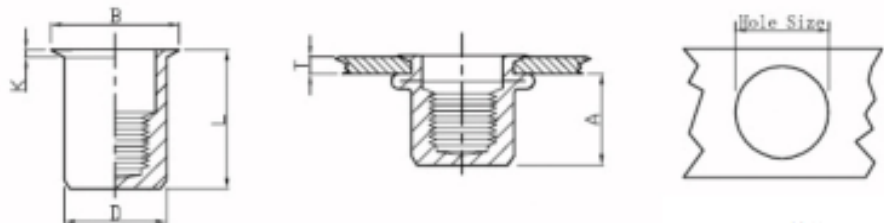
### 小沉头竖条纹盲孔 Reduce Head Knurled Body Closed End



Unit(单位):mm

螺纹 Thread	E(Grip Range) Min.Max.		A	Hole Size $\begin{smallmatrix} +0.1 \\ 0 \end{smallmatrix}$	K	B	D $\begin{smallmatrix} -0.07 \\ -0.1 \end{smallmatrix}$	L	编码 P/N
	Min.	Max.							
M4	0.5 2.0	2.0 3.5	11	6.0	0.5	7.0	5.9	15.0 16.5	FL-XCM4
M5	0.5 2.0	2.0 3.5	12.5	7.0	0.5	8.0	6.9	06.5 18.0	FL-XCM5
M6	0.5 3.0	3.0 4.5	15.5	9.0	0.6	10.0	8.9	20.5 22.0	FL-XCM6
M8	0.5 3.0	3.0 4.5	17.0	11.0	0.65	12.0	10.9	23.0 24.5	FL-XCM8
M10	1.0 3.0	3.0 5.0	18.2	13.0	0.7	14.0	12.9	24.5 26.0	FL-XCM10
M12	1.0 4.0	3.0 6.0	20.0	16.0	0.8	17.6	15.9	29.0 32.0	FL-XCM12

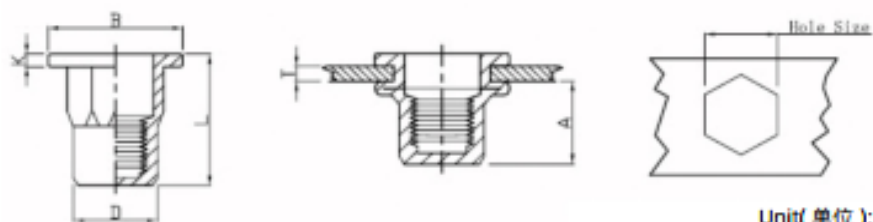
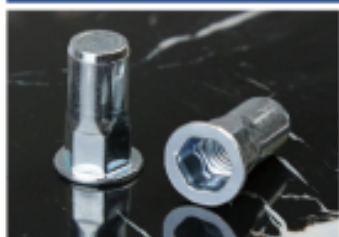
### 小沉头圆柱盲孔 Reduce Head Round Body Plain Closed End



Unit(单位):mm

螺纹 Thread	E(Grip Range) Min.Max.		A	Hole Size $\begin{smallmatrix} +0.1 \\ 0 \end{smallmatrix}$	K	B	D $\begin{smallmatrix} -0.07 \\ -0.1 \end{smallmatrix}$	L	编码 P/N
	Min.	Max.							
M4	0.5 2.0	2.0 3.5	11.0	6.0	0.5	7.0	5.9	15.0 16.0	FL-XCM4
M5	0.5 2.0	2.0 3.5	12.5	7.0	0.5	8.0	6.9	16.5 17.5	FL-XCM5
M6	0.5 2.5	2.5 4.0	15.5	9.0	0.6	10.0	8.9	20.5 22.0	FL-XCM6
M8	0.5 3.0	2.5 4.5	17.0	11.0	0.65	12.0	10.9	23.0 24.5	FL-XCM8
M10	1.0 3.0	3.0 5.0	18.2	13.0	0.7	14.1	12.9	24.5 26.0	FL-XCM10

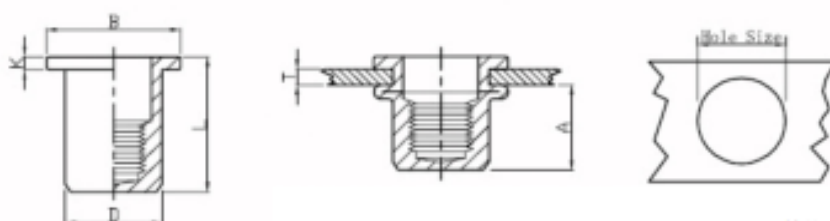
## 平头内外半六角盲孔 Flat Head Inner-Hex Closed End



Unit(单位):mm

螺纹 Thread	E(Grip Range) Min. Max.		A	Hole Size $\begin{matrix} +0.1 \\ 0 \end{matrix}$	K	B	D $\begin{matrix} +0.07 \\ -0.1 \end{matrix}$	L	编码 P/N
M4	0.5 2.0	2.0 4.0	11.5	6.0	0.8	9.0	5.9	16.0 17.0	FL-PBLM4
M5	0.5 2.5	2.5 4.5	13.5	7.0	1.0	10.0	6.9	18.5 19.5	FL-PBLM5
M6	0.5 3.0	3.0 5.5	17.0	9.0	1.35	12.7	8.9	23.0 25.0	FL-PBLM6
M8	1.0 3.5	3.5 6.0	18.2	11.0	1.5	16.0	10.9	25.0 27.0	FL-PBLM8
M10	1.0 4.0	4.0 6.0	25.0	13.0	1.7	18.0(*19.0)	12.9	33.0 35.0	FL-PBLM10
M12	4.0 6.5	6.5 8.5	27.0	16.0	2.0	23.0	15.9	34.0 37.0	FL-PBLM12

## 电梯螺母 Elevator Nut



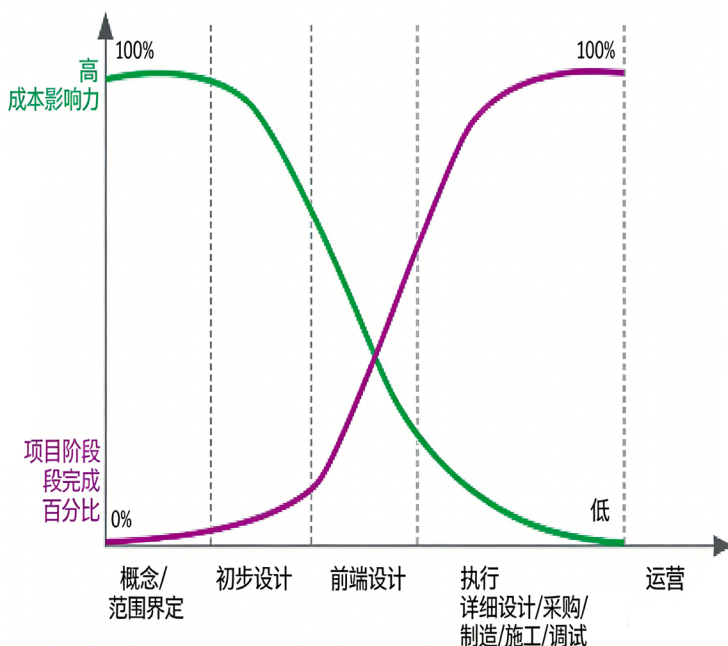
Unit(单位):mm

螺纹 Thread	E(Grip Range) Min. Max.		A	Hole Size $\begin{matrix} +0.1 \\ 0 \end{matrix}$	K	B	D $\begin{matrix} +0.07 \\ -0.1 \end{matrix}$	L	编码 P/N
M6	1.0-3.0		10	9.0	5.0	12.0	8.9	18.0	FL-DT6
M8	1.0-3.5		11.5	11.0	6.0	14.0	10.9	21.5	FL-DT8
M10	1.0-4.0		12.5	14.3	6.0	18.0	14.2	22.5	FL-DT10

# 行业挑战

## 项目周期成本影响力模型

在当今快速发展的社会中，企业研发面临的核心挑战在于：前期决策窗口极短却锁定了大部分的成本；而后期虽投入巨大纠错成本却极高，导致风险与收益严重错配。这要求企业必须在极早期就做出精准判断以应对市场的不确定性。



## 15-85 定律

当今企业面临的另一个挑战在于：过度聚焦显性的采购成本，却忽视了占比 85% 的隐性成本。企业在设计、供应链、售后等环节往往缺乏系统统筹，导致因前期决策失误引发的高制造成本、返工、质量售后等问题，最终大幅推高了全生命周期总成本。

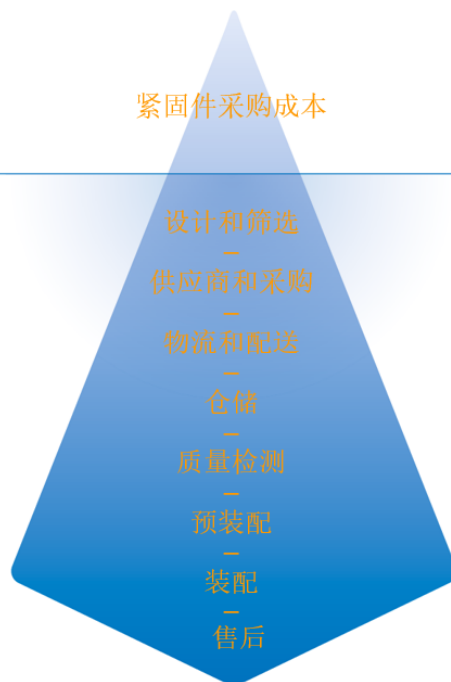
**15%**

可见成本

紧固件采购成本

**85%**

隐性成本



# 志诚嘉六个服务

从原型设计到售后的总成本优化专家



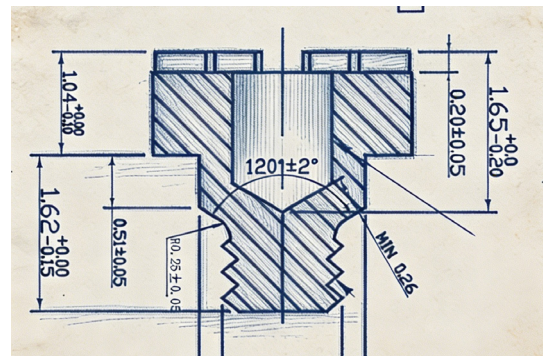
专业设计咨询



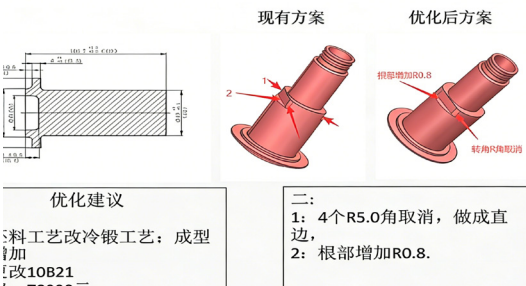
专业培训



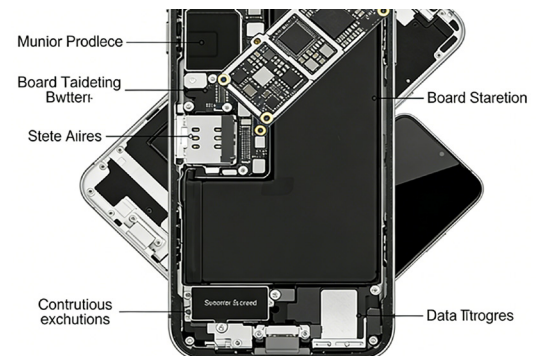
专业测试服务



专业设计咨询



持续工艺优化



专业拆解分析



盈锋志诚嘉精密五金（深圳）有限公司 - 总部

地址：深圳市坪山区坑梓街道中兴路 13 号

电话：0755-84061349

志诚嘉金属科技（襄阳）有限公司 - 汽车专用工厂

地址：湖北省襄阳市谷城县城关镇三岔路经济开发区

电话：0710-7269998

PT Top precision Fastening Indonesia -Oversea factory

Adress: Jababeka Phase 8, Industri 1, Jl. Tekno Raya Blok A2B, Tanjungsari, Kec. Cikarang Utara, Kabupaten Bekasi, Jawa Barat 17530, Indonesia

公司官网：[www.zcjtech.com](http://www.zcjtech.com)

盈锋志诚嘉 | 紧固件领域的创新领先者